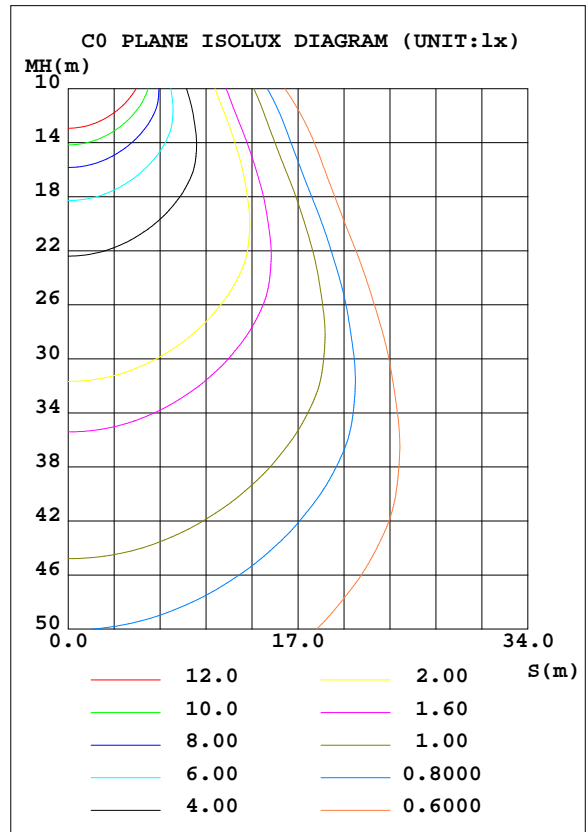
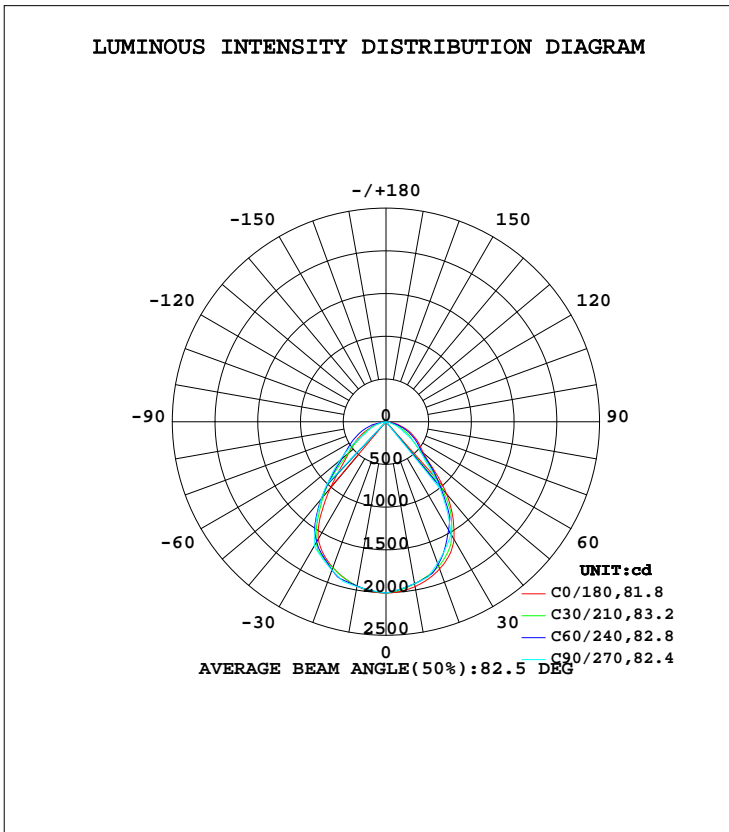


LUMINAIRE PHOTOMETRIC TEST REPORT

Test:U:230.35V I:0.1376A P:30.938W PF:0.9763 Freq:50.00Hz Lamp Flux:3750x1 lm		
NAME: IL-PN595U(S) 4.000K	TYPE:	WEIGHT:
SPEC.:	DIM.:	SERIAL No.:
MFR.: EVERFINE	SUR.:550*550	Shielding Angle:

DATA OF LAMP		PHOTOMETRIC DATA Eff: 121.21 lm/W			
MODEL	IL-PN595U(S) 4.000K	Imax(cd)	2006	S/MH(C0/180)	1.18
NOMINAL POWER(W)	30	LOR(%)	100.0	S/MH(C90/270)	1.12
RATED VOLTAGE(V)	230	TOTAL FLUX(lm)	3750.0	η UP, DN(C0-180)	0.0,52.4
NOMINAL FLUX(lm)	3750	CIE CLASS	DIRECT	η UP, DN(C180-360)	0.0,47.6
LAMPS INSIDE	1	η up(%)	0.0	CIBSE SHR NOM	1.25
TEST VOLTAGE(V)	230	η down(%)	100.0	CIBSE SHR MAX	1.25



βH( ) Range:-90 - 90DEG  
 βH( ) Interval: 1.0DEG  
 Test Speed: HIGH  
 Temperature:25.3DEG  
 Operators:  
 Test Date:2023-06-03

V(B) Range:-75 - 75DEG  
 V(B) Interval: 5.0DEG  
 Test System:EVERFINE GO-2000B\_V1 SYSTEM V2.0.404.7  
 Humidity:65.0%  
 Test Distance:8.240m [K=1.0000]  
 Remarks: IL-PN595U(S) 4.000K

ZONAL FLUX DIAGRAM

ZONAL FLUX DIAGRAM:

γ	C0	C45	C90	C135	C180	C225	C270	C315	γ	Φ zone	Φ total	%lum,lamp
10	1954	1951	1958	1947	1959	1924	1924	1926	0- 10	187.7	187.7	5,5
20	1817	1857	1849	1852	1833	1804	1763	1809	10- 20	533.0	720.7	19.2,19.2
30	1585	1586	1679	1586	1591	1475	1523	1476	20- 30	783.1	1504	40.1,40.1
40	1012	1171	1177	1203	1104	1052	942.4	1012	30- 40	833.6	2337	62.3,62.3
50	569.2	665.0	712.0	680.8	573.4	578.0	514.8	547.0	40- 50	623.4	2961	79,79
60	363.5	366.5	283.2	362.6	407.8	318.4	239.7	298.3	50- 60	400.2	3361	89.6,89.6
70	183.2	239.9	157.4	220.9	249.3	198.0	115.1	208.4	60- 70	251.0	3612	96.3,96.3
80	62.53	114.5	0	107.4	95.42	84.72	0	80.58	70- 80	124.5	3737	99.6,99.6
90	1.263	0	0	0	1.712	0	0	0	80- 90	13.49	3750	100,100
100									90-100			
110									100-110			
120									110-120			
130									120-130			
140									130-140			
150									140-150			
160									150-160			
170									160-170			
180									170-180			
DEG	LUMINOUS INTENSITY:cd									UNIT:lm		

Conical surface Flux(90deg): 2684.3 lm

%lum = 71.6%  
%lamp = 71.6%

Conical surface Flux(120deg): 3361 lm

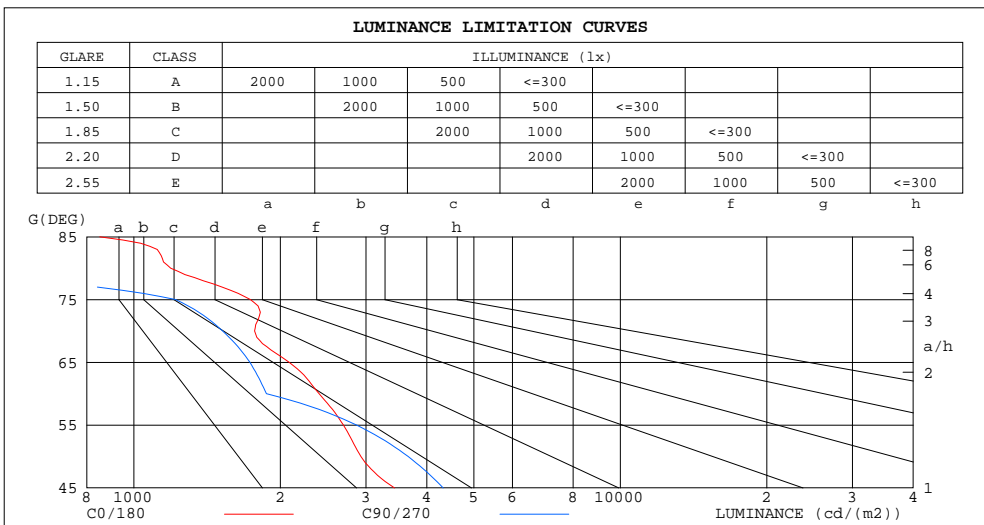
%lum = 89.6%  
%lamp = 89.6%

βH( ) Range:-90 - 90DEG  
βH( ) Interval: 1.0DEG  
Test Speed: HIGH  
Temperature:25.3DEG  
Operators:  
Test Date:2023-06-03

V(B) Range:-75 - 75DEG  
V(B) Interval: 5.0DEG  
Test System:EVERFINE GO-2000B\_V1 SYSTEM V2.0.404.7  
Humidity:65.0%  
Test Distance:8.240m [K=1.0000]  
Remarks: IL-PN595U(S) 4.000K

LUMINANCE LIMITATION CURVES

Test:U:230.35V I:0.1376A P:30.938W PF:0.9763 Freq:50.00Hz Lamp Flux:3750x1 lm		
NAME: IL-PN595U(S) 4.000K	TYPE:	WEIGHT:
SPEC.:	DIM.:	SERIAL No.:
MFR.: EVERFINE	SUR.:550*550	Shielding Angle:



LUMINANCE cd/(m2)		
G (DEG)	C0/180	C90/270
85	851	0
80	1190	0
75	1736	1219
70	1771	1521
65	2085	1732
60	2403	1872
55	2696	2869
50	2928	3662
45	3432	4322

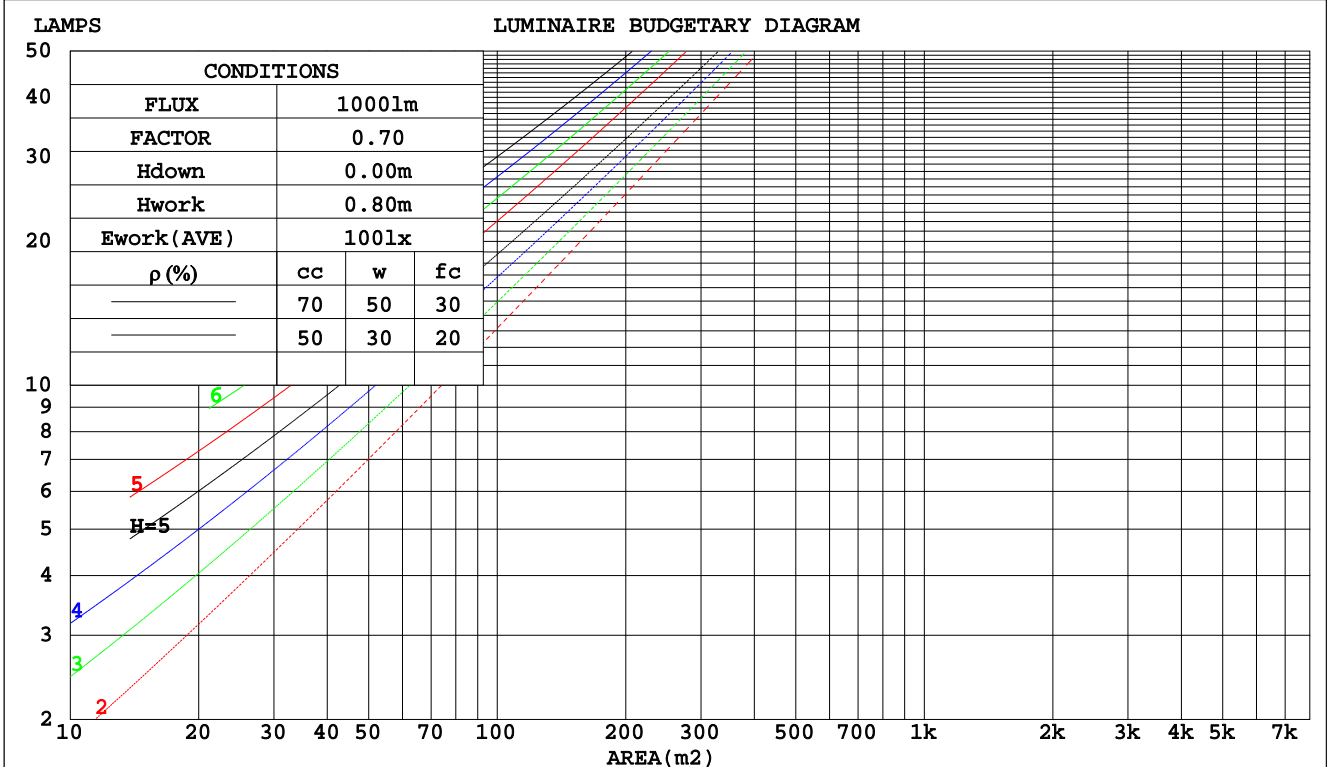
$\beta H$  ( ) Range:-90 - 90DEG  
 $\beta H$  ( ) Interval: 1.0DEG  
 Test Speed: HIGH  
 Temperature:25.3DEG  
 Operators:  
 Test Date:2023-06-03

V(B) Range:-75 - 75DEG  
 V(B) Interval: 5.0DEG  
 Test System:EVERFINE GO-2000B\_V1 SYSTEM V2.0.404.7  
 Humidity:65.0%  
 Test Distance:8.240m [K=1.0000]  
 Remarks: IL-PN595U(S) 4.000K

CU AND LUMINAIRE BUDGETARY ESTIMATE DIAGRAM

Test:U:230.35V I:0.1376A P:30.938W PF:0.9763 Freq:50.00Hz Lamp Flux:3750x1 lm		
NAME: IL-PN595U(S) 4.000K	TYPE:	WEIGHT:
SPEC.:	DIM.:	SERIAL No.:
MFR.: EVERFINE	SUR.:550*550	Shielding Angle:

pcc	80%			70%			50%			30%			10%			0
	50%	30%	10%	50%	30%	10%	50%	30%	10%	50%	30%	10%	50%	30%	10%	0
pw																
pfc	20%			20%			20%			20%			20%			0
RCR	RCR:Room Cavity Ratio      Coefficients of Utilization(CU)															
0.0	1.19	1.19	1.19	1.16	1.16	1.16	1.11	1.11	1.11	1.06	1.06	1.06	1.02	1.02	1.02	.00
1.0	1.07	1.04	1.01	1.05	1.02	.99	1.01	.98	.96	.97	.95	.93	.93	.92	.90	.88
2.0	.96	.90	.85	.94	.89	.84	.91	.86	.83	.87	.84	.81	.85	.82	.79	.77
3.0	.86	.79	.74	.85	.78	.73	.82	.76	.72	.79	.75	.71	.77	.73	.70	.68
4.0	.78	.70	.65	.77	.70	.64	.74	.68	.63	.72	.67	.62	.70	.65	.62	.60
5.0	.71	.63	.57	.70	.62	.57	.68	.61	.56	.66	.60	.56	.64	.59	.55	.53
6.0	.65	.57	.51	.64	.56	.51	.62	.55	.50	.60	.54	.50	.59	.54	.50	.48
7.0	.59	.51	.46	.58	.51	.46	.57	.50	.45	.56	.50	.45	.54	.49	.45	.43
8.0	.55	.47	.42	.54	.47	.42	.53	.46	.41	.51	.45	.41	.50	.45	.41	.39
9.0	.51	.43	.38	.50	.43	.38	.49	.42	.38	.48	.42	.38	.47	.41	.37	.36
10.0	.47	.40	.35	.46	.39	.35	.45	.39	.35	.45	.39	.35	.44	.38	.34	.33



βH( ) Range:-90 - 90DEG  
 βH( ) Interval: 1.0DEG  
 Test Speed: HIGH  
 Temperature:25.3DEG  
 Operators:  
 Test Date:2023-06-03

V(B) Range:-75 - 75DEG  
 V(B) Interval: 5.0DEG  
 Test System:EVERFINE GO-2000B\_V1 SYSTEM V2.0.404.7  
 Humidity:65.0%  
 Test Distance:8.240m [K=1.0000]  
 Remarks: IL-PN595U(S) 4.000K

WEC AND CCEC

Test:U:230.35V I:0.1376A P:30.938W PF:0.9763 Freq:50.00Hz Lamp Flux:3750x1 lm		
NAME: IL-PN595U(S) 4.000K	TYPE:	WEIGHT:
SPEC.:	DIM.:	SERIAL No.:
MFR.: EVERFINE	SUR.:550*550	Shielding Angle:

ρcc	80%			70%			50%			30%			10%			0
ρw	50%	30%	10%	50%	30%	10%	50%	30%	10%	50%	30%	10%	50%	30%	10%	0
ρfc	20%			20%			20%			20%			20%			0
RCR	RCR:Room Cavity Ratio						Wall Exitance Coefficients(WEC)									
0.0																
1.0	.248	.141	.045	.241	.138	.044	.228	.131	.042	.216	.125	.040	.205	.119	.038	
2.0	.240	.131	.040	.234	.129	.040	.223	.124	.038	.212	.119	.037	.203	.115	.036	
3.0	.226	.121	.036	.221	.118	.036	.211	.115	.035	.202	.111	.034	.194	.107	.033	
4.0	.213	.111	.032	.208	.109	.032	.199	.106	.032	.191	.103	.031	.184	.100	.030	
5.0	.200	.102	.029	.196	.100	.029	.188	.098	.029	.181	.095	.028	.174	.093	.028	
6.0	.188	.094	.027	.184	.093	.027	.177	.091	.026	.171	.089	.026	.165	.087	.026	
7.0	.177	.087	.025	.173	.086	.025	.167	.085	.024	.162	.083	.024	.156	.081	.024	
8.0	.167	.081	.023	.164	.081	.023	.158	.079	.023	.153	.078	.022	.148	.076	.022	
9.0	.157	.076	.021	.155	.076	.021	.150	.074	.021	.145	.073	.021	.141	.072	.021	
10.0	.149	.072	.020	.147	.071	.020	.142	.070	.020	.138	.069	.020	.134	.068	.019	

ρcc	80%			70%			50%			30%			10%			0
ρw	50%	30%	10%	50%	30%	10%	50%	30%	10%	50%	30%	10%	50%	30%	10%	0
ρfc	20%			20%			20%			20%			20%			0
RCR	RCR:Room Cavity Ratio						Ceiling Cavity Exitance Coefficients(CCEC)									
0.0	.190	.190	.190	.163	.163	.163	.111	.111	.111	.064	.064	.064	.020	.020	.020	
1.0	.176	.157	.139	.151	.134	.120	.103	.093	.083	.059	.054	.048	.019	.017	.016	
2.0	.165	.132	.104	.142	.114	.090	.097	.079	.063	.056	.046	.037	.018	.015	.012	
3.0	.156	.114	.080	.134	.098	.070	.092	.068	.049	.053	.040	.029	.017	.013	.009	
4.0	.148	.100	.064	.127	.087	.055	.087	.060	.039	.050	.035	.023	.016	.012	.008	
5.0	.140	.089	.052	.121	.077	.045	.083	.054	.032	.048	.032	.019	.015	.010	.006	
6.0	.133	.081	.043	.115	.070	.037	.079	.049	.026	.046	.029	.016	.015	.009	.005	
7.0	.127	.074	.036	.109	.064	.032	.075	.045	.022	.044	.026	.013	.014	.009	.004	
8.0	.121	.068	.031	.104	.059	.027	.072	.041	.019	.042	.024	.011	.014	.008	.004	
9.0	.116	.063	.027	.100	.054	.024	.069	.038	.017	.040	.023	.010	.013	.007	.003	
10.0	.110	.059	.024	.095	.051	.021	.066	.036	.015	.039	.021	.009	.012	.007	.003	

βH( ) Range:-90 - 90DEG  
 βH( ) Interval: 1.0DEG  
 Test Speed: HIGH  
 Temperature:25.3DEG  
 Operators:  
 Test Date:2023-06-03

V(B) Range:-75 - 75DEG  
 V(B) Interval: 5.0DEG  
 Test System:EVERFINE GO-2000B\_V1 SYSTEM V2.0.404.7  
 Humidity:65.0%  
 Test Distance:8.240m [K=1.0000]  
 Remarks: IL-PN595U(S) 4.000K

UGR(Unified Glare Rating) Table

Test:U:230.35V I:0.1376A P:30.938W PF:0.9763 Freq:50.00Hz Lamp Flux:3750x1 lm		
NAME: IL-PN595U(S) 4.000K	TYPE:	WEIGHT:
SPEC.:	DIM.:	SERIAL No.:
MFR.: EVERFINE	SUR.:550*550	Shielding Angle:

ceiling/cavity	0.7	0.7	0.5	0.5	0.3	0.7	0.7	0.5	0.5	0.3
walls	0.5	0.3	0.5	0.3	0.3	0.5	0.3	0.5	0.3	0.3
working plane	0.2	0.2	0.2	0.2	0.2	0.2	0.2	0.2	0.2	0.2
Room dimensions	Viewed crosswise					Viewed endwise				
x = 2H y = 2H	15.4	16.7	15.7	16.9	17.1	16.3	17.6	16.5	17.8	18.0
3H	16.2	17.4	16.5	17.7	17.9	17.0	18.2	17.3	18.4	18.6
4H	16.6	17.8	16.9	18.0	18.2	17.2	18.3	17.5	18.6	18.8
6H	16.8	17.9	17.2	18.2	18.4	17.2	18.2	17.5	18.5	18.8
8H	16.9	17.9	17.2	18.2	18.4	17.1	18.1	17.4	18.4	18.7
12H	16.9	17.8	17.2	18.1	18.4	17.1	18.1	17.4	18.3	18.6
4H 2H	15.8	17.0	16.1	17.2	17.5	16.6	17.7	16.9	18.0	18.2
3H	16.7	17.7	17.1	18.0	18.3	17.7	18.7	18.0	18.9	19.2
4H	17.1	18.0	17.5	18.4	18.7	18.1	19.0	18.5	19.3	19.7
6H	17.5	18.3	17.9	18.6	19.0	18.2	18.9	18.5	19.3	19.6
8H	17.5	18.3	17.9	18.6	19.0	18.1	18.8	18.5	19.2	19.6
12H	17.6	18.2	18.0	18.6	19.0	18.1	18.7	18.5	19.1	19.5
8H 4H	17.5	18.2	17.9	18.5	18.9	18.4	19.1	18.8	19.4	19.8
6H	17.8	18.4	18.2	18.8	19.2	18.5	19.1	18.9	19.5	19.9
8H	17.9	18.5	18.4	18.9	19.3	18.4	18.9	18.9	19.4	19.8
12H	18.0	18.5	18.5	18.9	19.4	18.4	18.8	18.8	19.3	19.7
12H 4H	17.4	18.1	17.9	18.5	18.9	18.3	19.0	18.7	19.4	19.8
6H	17.8	18.3	18.3	18.8	19.2	18.4	19.0	18.9	19.4	19.8
8H	17.9	18.4	18.4	18.8	19.3	18.4	18.9	18.9	19.3	19.8
Variations with the observer position at spacings:										
S = 1.0H	+ 0.7 / - 0.7					+ 0.4 / - 0.5				
1.5H	+ 0.4 / - 0.6					+ 0.3 / - 0.4				
2.0H	+ 0.9 / - 0.7					+ 0.9 / - 1.8				

CIE Pub.117, 3750 lm Total Lamp Luminous Flux Corrected (8log(F/F0) = 4.6)

βH( ) Range:-90 - 90DEG  
 βH( ) Interval: 1.0DEG  
 Test Speed: HIGH  
 Temperature:25.3DEG  
 Operators:  
 Test Date:2023-06-03

V(B) Range:-75 - 75DEG  
 V(B) Interval: 5.0DEG  
 Test System:EVERFINE GO-2000B\_V1 SYSTEM V2.0.404.7  
 Humidity:65.0%  
 Test Distance:8.240m [K=1.0000]  
 Remarks: IL-PN595U(S) 4.000K

**UTILIZATION FACTORS TABLE**

Test:U:230.35V I:0.1376A P:30.938W PF:0.9763 Freq:50.00Hz Lamp Flux:3750x1 lm		
NAME: IL-PN595U(S) 4.000K	TYPE:	WEIGHT:
SPEC.:	DIM.:	SERIAL No.:
MFR.: EVERFINE	SUR.:550*550	Shielding Angle:

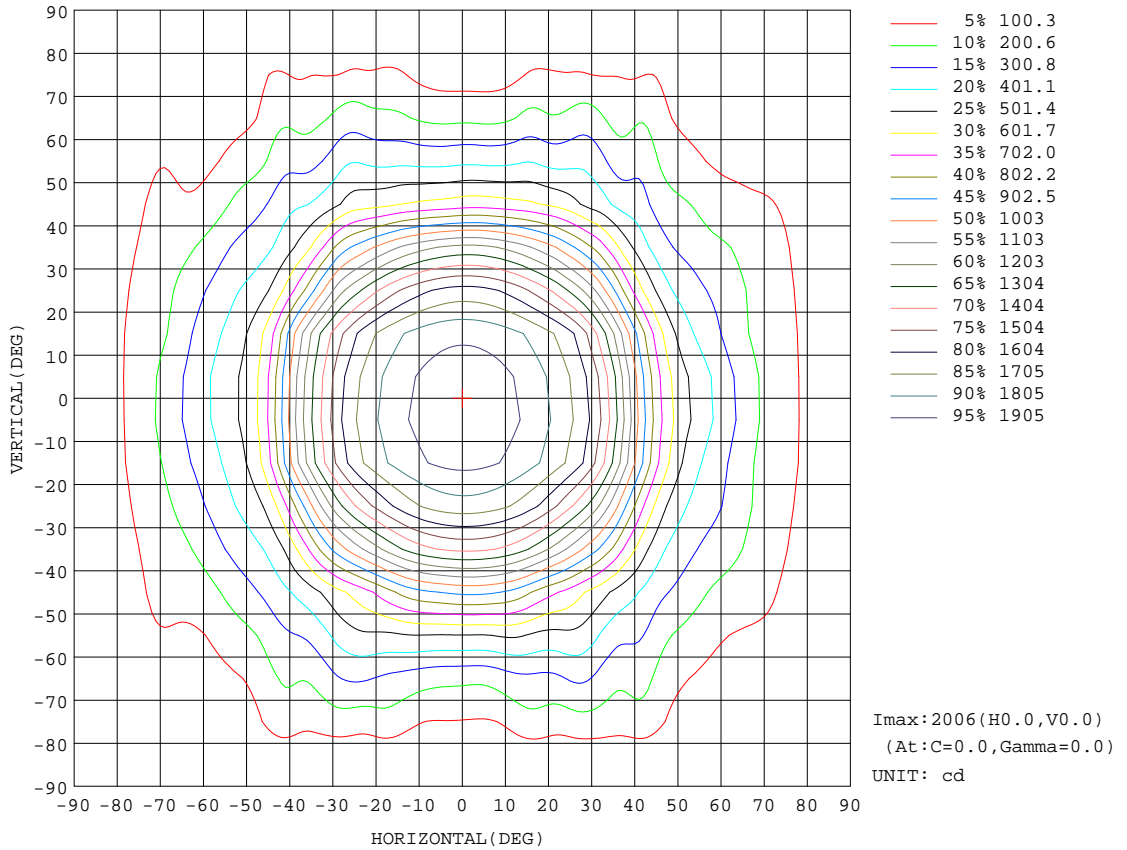
REFLECTANCE										
Ceiling	0.8	0.8	0.8	0.7	0.7	0.7	0.5	0.5	0.5	0
Walls	0.7	0.5	0.3	0.7	0.5	0.3	0.7	0.5	0.3	0
Working plane	0.2	0.2	0.2	0.2	0.2	0.2	0.2	0.2	0.2	0
ROOM INDEX	UTILIZATION FACTORS(PERCENT) $k(RI) \times RCR = 5$									
k = 0.60	68	58	52	67	58	52	66	58	52	47
0.80	78	68	62	77	68	62	75	67	62	56
1.00	85	76	70	84	76	70	82	76	69	64
1.25	91	83	77	90	82	77	88	81	76	70
1.50	95	88	82	94	87	82	91	85	81	74
2.00	101	94	89	99	93	88	96	91	87	80
2.50	104	98	93	102	96	92	98	94	90	83
3.00	106	101	97	104	100	96	101	97	94	86
4.00	110	105	102	107	103	100	103	100	98	89
5.00	111	108	105	109	106	103	105	102	100	91
ROOM INDEX	UF(total)									Direct
According to DIN EN 13032-2 2004			Suspended				SHRNOM = 1.25			

H( $\beta$ ) Range:-90 - 90DEG  
 $\beta$ H( ) Interval: 1.0DEG  
 Test Speed: HIGH  
 Temperature:25.3DEG  
 Operators:  
 Test Date:2023-06-03

V(B) Range:-75 - 75DEG  
 V(B) Interval: 5.0DEG  
 Test System:EVERFINE GO-2000B\_V1 SYSTEM V2.0.404.7  
 Humidity:65.0%  
 Test Distance:8.240m [K=1.0000]  
 Remarks: IL-PN595U(S) 4.000K

ISOCANDELA DIAGRAM

Test:U:230.35V I:0.1376A P:30.938W PF:0.9763 Freq:50.00Hz Lamp Flux:3750x1 lm		
NAME: IL-PN595U(S) 4.000K	TYPE:	WEIGHT:
SPEC.:	DIM.:	SERIAL No.:
MFR.: EVERFINE	SUR.:550*550	Shielding Angle:



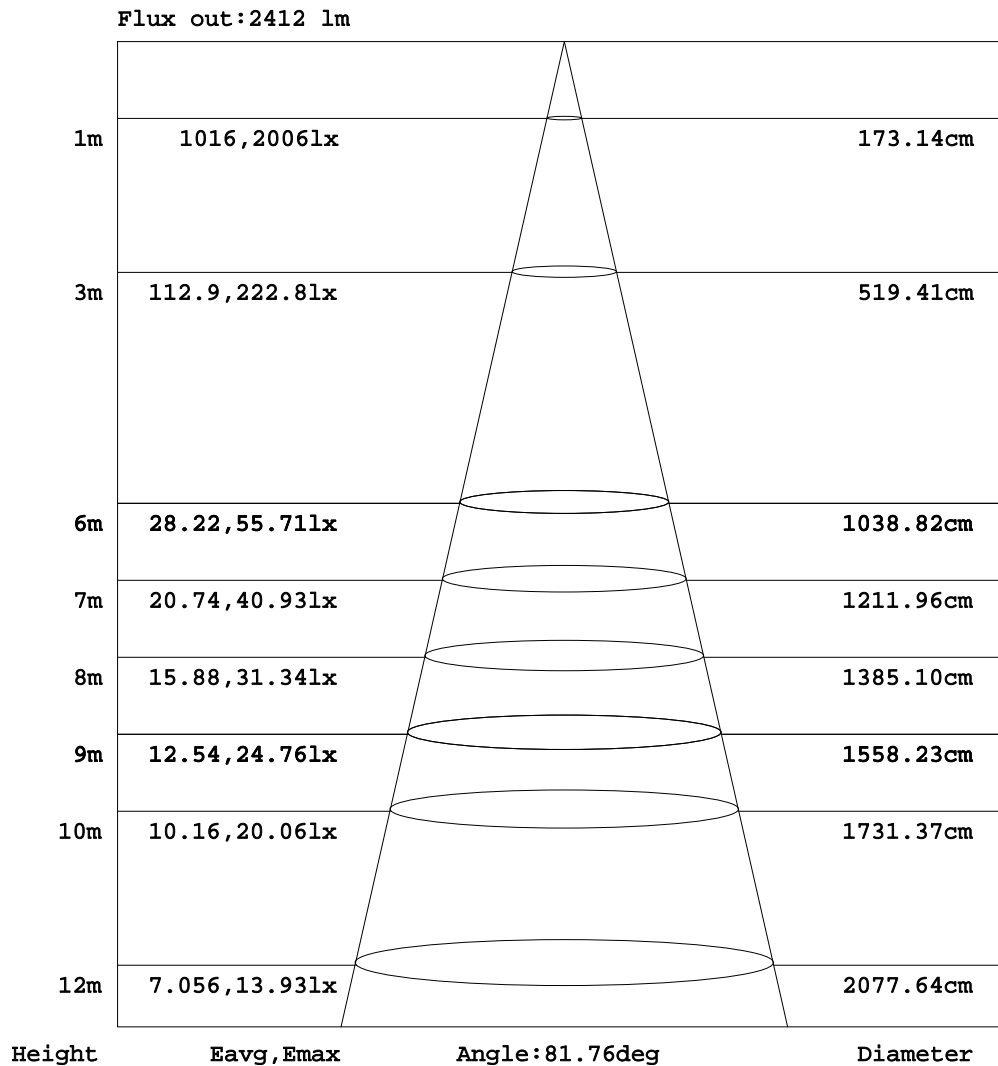
βH( ) Range:-90 - 90DEG  
 βH( ) Interval: 1.0DEG  
 Test Speed: HIGH  
 Temperature:25.3DEG  
 Operators:  
 Test Date:2023-06-03

V(B) Range:-75 - 75DEG  
 V(B) Interval: 5.0DEG  
 Test System:EVERFINE GO-2000B\_V1 SYSTEM V2.0.404.7  
 Humidity:65.0%  
 Test Distance:8.240m [K=1.0000]  
 Remarks: IL-PN595U(S) 4.000K



AAI Figure

Test:U:230.35V I:0.1376A P:30.938W PF:0.9763 Freq:50.00Hz Lamp Flux:3750x1 lm		
NAME: IL-PN595U(S) 4.000K	TYPE:	WEIGHT:
SPEC.:	DIM.:	SERIAL No.:
MFR.: EVERFINE	SUR.:550*550	Shielding Angle:



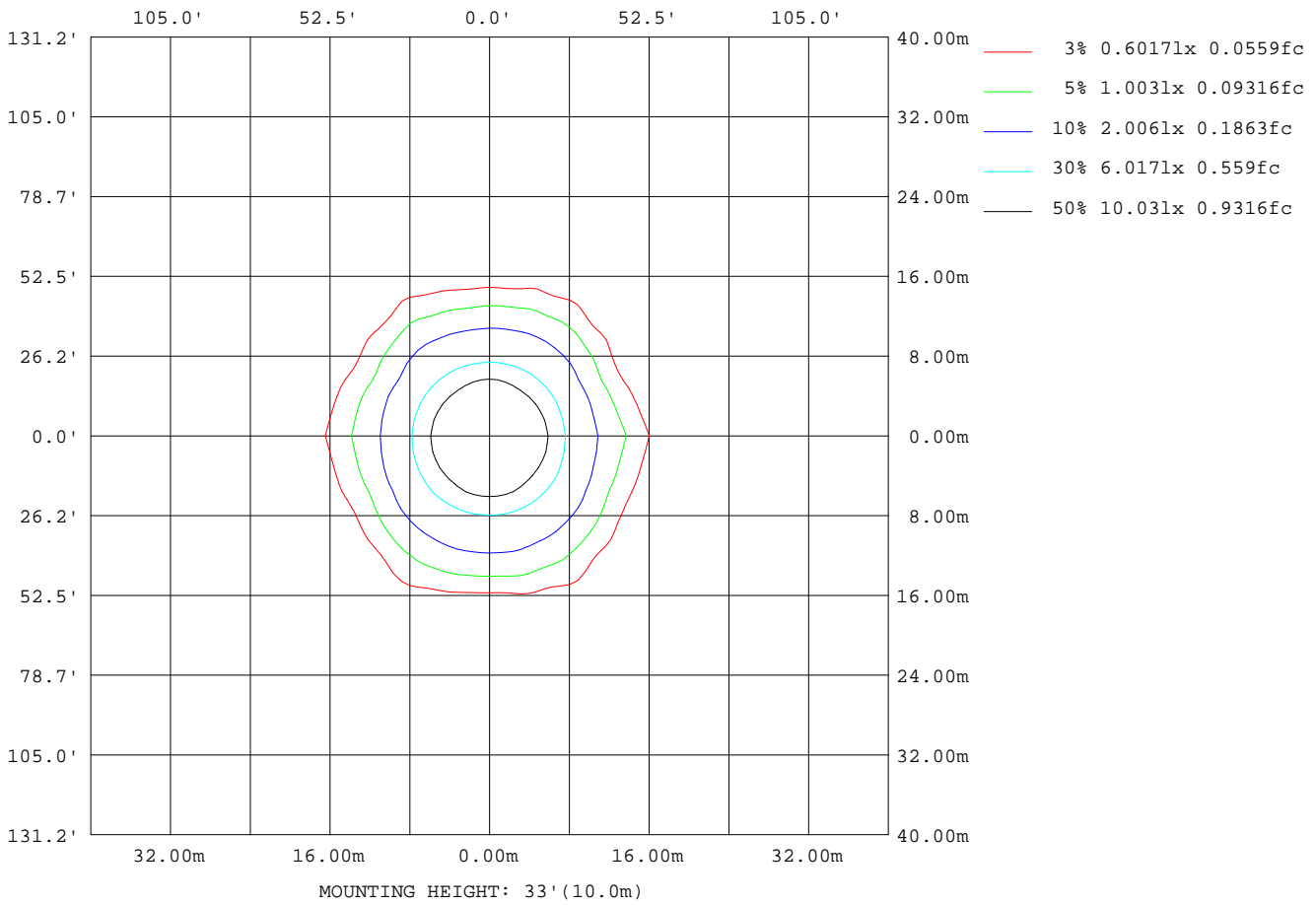
Note:The Curves indicate the illuminated area and the average illumination when the luminaire is at different distance.

βH( ) Range:-90 - 90DEG  
 βH( ) Interval: 1.0DEG  
 Test Speed: HIGH  
 Temperature:25.3DEG  
 Operators:  
 Test Date:2023-06-03

V(B) Range:-75 - 75DEG  
 V(B) Interval: 5.0DEG  
 Test System:EVERFINE GO-2000B\_V1 SYSTEM V2.0.404.7  
 Humidity:65.0%  
 Test Distance:8.240m [K=1.0000]  
 Remarks: IL-PN595U(S) 4.000K

ISOLUX DIAGRAM

Test:U:230.35V I:0.1376A P:30.938W PF:0.9763 Freq:50.00Hz Lamp Flux:3750x1 lm		
NAME: IL-PN595U(S) 4.000K	TYPE:	WEIGHT:
SPEC.:	DIM.:	SERIAL No.:
MFR.: EVERFINE	SUR.:550*550	Shielding Angle:



βH( ) Range:-90 - 90DEG  
 βH( ) Interval: 1.0DEG  
 Test Speed: HIGH  
 Temperature:25.3DEG  
 Operators:  
 Test Date:2023-06-03

V(B) Range:-75 - 75DEG  
 V(B) Interval: 5.0DEG  
 Test System:EVERFINE GO-2000B\_V1 SYSTEM V2.0.404.7  
 Humidity:65.0%  
 Test Distance:8.240m [K=1.0000]  
 Remarks: IL-PN595U(S) 4.000K

**LED Avg.L Report**

Test:U:230.35V I:0.1376A P:30.938W PF:0.9763 Freq:50.00Hz Lamp Flux:3750x1 lm		
NAME: IL-PN595U(S) 4.000K	TYPE:	WEIGHT:
SPEC.:	DIM.:	SERIAL No.:
MFR.: EVERFINE	SUR.:550*550	Shielding Angle:

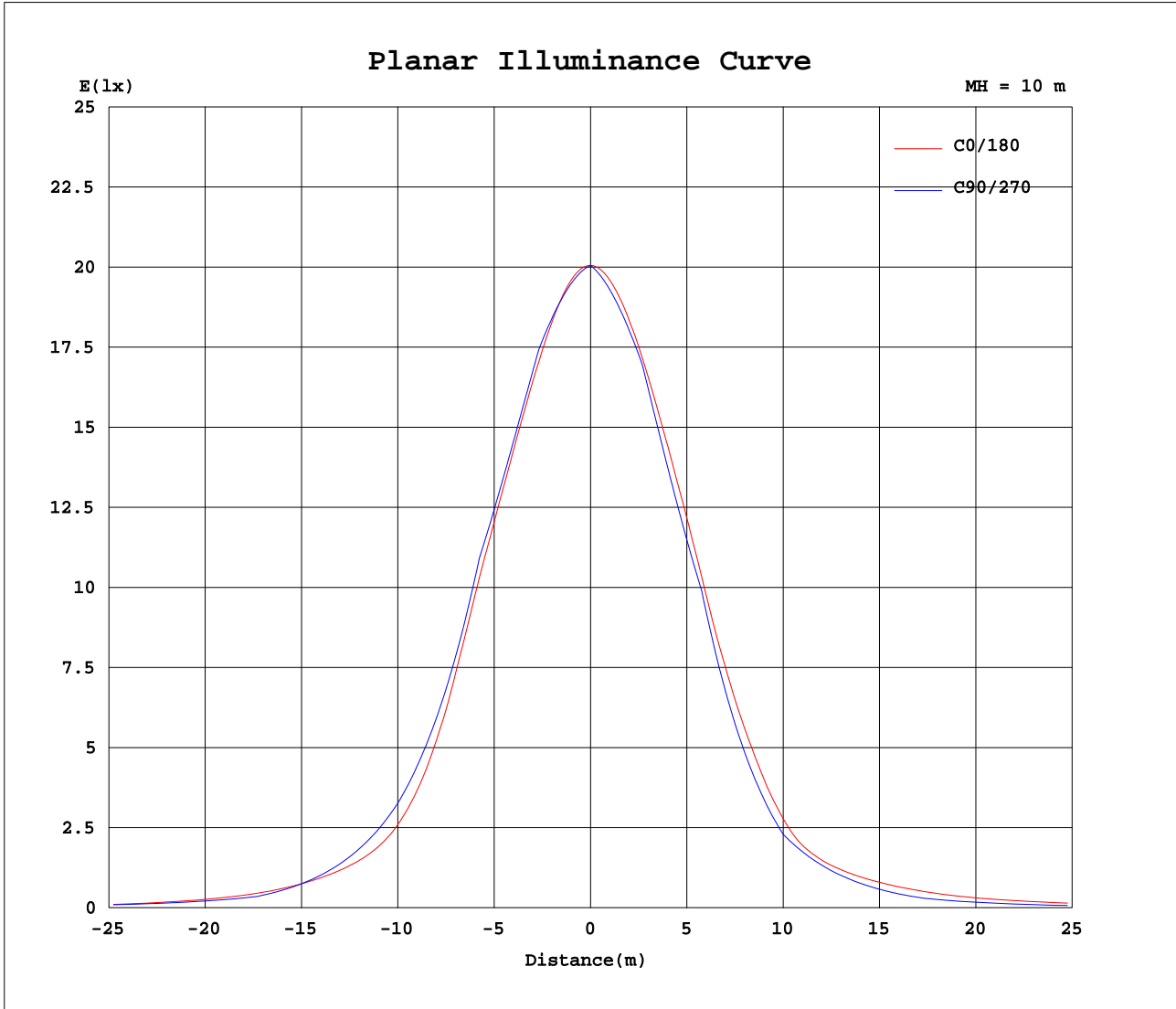
AvgL	cd/m2
L_0~180(65)av	2325
L_0~180(75)av	1911
L_0~180(85)av	1158
L_90~270(65)av	1560
L_90~270(75)av	947
L_90~270(85)av	0
L_45(65)av	2126
L_45(75)av	2081
L_45(85)av	0

Standard: GB/T 29293-2012

βH( ) Range:-90 - 90DEG  
 βH( ) Interval: 1.0DEG  
 Test Speed: HIGH  
 Temperature:25.3DEG  
 Operators:  
 Test Date:2023-06-03

V(B) Range:-75 - 75DEG  
 V(B) Interval: 5.0DEG  
 Test System:EVERFINE GO-2000B\_V1 SYSTEM V2.0.404.7  
 Humidity:65.0%  
 Test Distance:8.240m [K=1.0000]  
 Remarks: IL-PN595U(S) 4.000K

Planar Illuminance Curve



$\beta$ H( ) Range:-90 - 90DEG  
 $\beta$ H( ) Interval: 1.0DEG  
 Test Speed: HIGH  
 Temperature:25.3DEG  
 Operators:  
 Test Date:2023-06-03

V(B) Range:-75 - 75DEG  
 V(B) Interval: 5.0DEG  
 Test System:EVERFINE GO-2000B\_V1 SYSTEM V2.0.404.7  
 Humidity:65.0%  
 Test Distance:8.240m [K=1.0000]  
 Remarks: IL-PN595U(S) 4.000K

**LUMINOUS DISTRIBUTION INTENSITY DATA**

Test:U:230.35V I:0.1376A P:30.938W PF:0.9763 Freq:50.00Hz Lamp Flux:3750x1 lm		
NAME: IL-PN595U(S) 4.000K	TYPE:	WEIGHT:
SPEC.:	DIM.:	SERIAL No.:
MFR.: EVERFINE	SUR.:550*550	Shielding Angle:

Table--1

UNIT: cd

C( DEG) γ (DEG)	0	5	10	15	20	25	30	35	40	45	50	55	60	65	70	75	80	85	90
0	2006	2006	2006	2006	2006	2006	2006	2006	2006	2006	2006	2006	2006	2006	2006	2006	2006	2006	2006
5	1993	1992	1990	1989	1988	1987	1986	1986	1985	1985	1984	1984	1984	1983	1983	1983	1982	1982	1982
10	1954	1952	1951	1950	1950	1951	1952	1951	1950	1951	1951	1952	1953	1954	1955	1956	1957	1958	1958
15	1893	1892	1892	1894	1896	1894	1893	1894	1896	1901	1908	1914	1920	1925	1929	1932	1934	1935	1935
20	1817	1817	1819	1822	1818	1817	1821	1832	1844	1857	1857	1850	1847	1845	1845	1846	1847	1848	1849
25	1720	1722	1729	1723	1720	1730	1750	1770	1749	1735	1728	1732	1739	1747	1753	1759	1762	1764	1764
30	1585	1592	1596	1584	1597	1632	1630	1596	1579	1586	1599	1614	1623	1636	1648	1660	1669	1676	1679
35	1332	1359	1357	1346	1412	1427	1395	1395	1406	1407	1417	1438	1444	1445	1444	1440	1435	1431	1427
40	1012	1058	1042	1082	1137	1103	1143	1176	1171	1171	1178	1186	1180	1176	1179	1181	1180	1178	1177
45	734	777	743	828	800	830	865	877	919	935	917	905	899	901	920	933	934	931	924
50	569	571	557	571	561	582	584	652	671	665	669	669	678	684	705	725	723	714	712
55	468	449	435	412	420	404	437	446	470	476	497	529	550	534	535	544	523	500	498
60	364	345	341	340	325	322	317	332	356	367	383	439	456	413	376	368	334	290	283
65	267	248	252	271	254	234	239	237	274	302	277	311	366	324	290	286	250	221	221
70	183	178	192	195	172	151	157	157	171	240	224	246	281	253	228	229	191	159	157
75	136	135	137	129	106	85.1	85.5	102	123	178	189	178	196	174	167	166	115	92.8	95.4
80	62.5	68.1	70.2	74.5	59.8	48.8	46.7	54.7	78.3	114	93.8	65.6	50.3	30.8	19.4	11.2	3.41	0.69	0.00
85	22.4	25.0	26.9	31.2	32.8	11.2	0.00	0.00	0.00	0.00	0.00	0.00	0.00	0.00	0.00	0.00	0.00	0.00	0.00
90	1.26	0.00	0.00	0.00	0.00	0.00	0.00	0.00	0.00	0.00	0.00	0.00	0.00	0.00	0.00	0.00	0.00	0.00	0.00

βH( ) Range:-90 - 90DEG  
 βH( ) Interval: 1.0DEG  
 Test Speed: HIGH  
 Temperature:25.3DEG  
 Operators:  
 Test Date:2023-06-03

V(B) Range:-75 - 75DEG  
 V(B) Interval: 5.0DEG  
 Test System:EVERFINE GO-2000B\_V1 SYSTEM V2.0.404.7  
 Humidity:65.0%  
 Test Distance:8.240m [K=1.0000]  
 Remarks: IL-PN595U(S) 4.000K

LUMINOUS DISTRIBUTION INTENSITY DATA

Test:U:230.35V I:0.1376A P:30.938W PF:0.9763 Freq:50.00Hz Lamp Flux:3750x1 lm		
NAME: IL-PN595U(S) 4.000K	TYPE:	WEIGHT:
SPEC.:	DIM.:	SERIAL No.:
MFR.: EVERFINE	SUR.:550*550	Shielding Angle:

Table--2

UNIT: cd

C(DEG) γ (DEG)	95	100	105	110	115	120	125	130	135	140	145	150	155	160	165	170	175	180	185	
0	2006	2006	2006	2006	2006	2006	2006	2006	2006	2006	2006	2006	2006	2006	2006	2006	2006	2006	2006	
5	1981	1981	1980	1980	1980	1980	1980	1980	1980	1981	1982	1982	1984	1985	1987	1988	1991	1993	1989	
10	1959	1958	1957	1956	1955	1953	1951	1949	1947	1945	1943	1941	1942	1944	1947	1950	1954	1959	1951	
15	1934	1932	1930	1927	1923	1919	1915	1912	1909	1905	1900	1895	1890	1886	1888	1892	1899	1907	1894	
20	1850	1850	1850	1849	1849	1849	1850	1853	1852	1845	1839	1836	1828	1818	1810	1813	1822	1833	1815	
25	1762	1759	1753	1748	1742	1739	1738	1740	1741	1747	1755	1747	1742	1733	1717	1707	1720	1738	1709	
30	1678	1673	1663	1649	1630	1608	1588	1581	1586	1600	1607	1611	1607	1600	1581	1549	1558	1591	1546	
35	1425	1425	1429	1432	1436	1442	1451	1424	1400	1387	1400	1412	1400	1391	1386	1338	1326	1367	1313	
40	1175	1175	1179	1179	1169	1160	1163	1180	1203	1183	1136	1133	1152	1133	1122	1093	1047	1104	1033	
45	916	917	920	917	908	906	910	912	906	906	893	826	821	835	791	799	721	788	712	
50	709	713	720	710	684	654	645	669	681	645	600	579	549	559	555	556	543	573	541	
55	500	514	532	538	549	552	535	493	456	465	450	414	421	426	445	440	455	486	455	
60	292	315	350	379	429	452	419	377	363	353	329	331	332	356	348	358	378	408	381	
65	227	243	270	298	343	365	331	274	276	264	246	239	242	248	273	283	303	328	297	
70	162	172	203	238	258	270	233	208	221	187	153	151	153	157	176	194	212	249	197	
75	97.7	107	150	170	167	187	170	165	183	123	92.6	84.5	79.3	101	135	138	152	163	144	
80	0.73	3.18	10.1	19.5	29.0	46.4	57.0	88.4	107	71.0	53.5	49.7	51.3	65.1	83.7	73.1	72.4	95.4	83.7	
85	0.00	0.00	0.00	0.00	0.00	0.00	0.00	0.00	0.00	0.00	0.00	0.00	0.00	14.4	36.3	42.3	31.8	23.0	38.6	34.6
90	0.00	0.00	0.00	0.00	0.00	0.00	0.00	0.00	0.00	0.00	0.00	0.00	0.00	0.00	0.00	0.00	0.00	0.00	1.71	0.00

βH( ) Range:-90 - 90DEG  
 βH( ) Interval: 1.0DEG  
 Test Speed: HIGH  
 Temperature:25.3DEG  
 Operators:  
 Test Date:2023-06-03

V(B) Range:-75 - 75DEG  
 V(B) Interval: 5.0DEG  
 Test System:EVERFINE GO-2000B\_V1 SYSTEM V2.0.404.7  
 Humidity:65.0%  
 Test Distance:8.240m [K=1.0000]  
 Remarks: IL-PN595U(S) 4.000K

LUMINOUS DISTRIBUTION INTENSITY DATA

Test:U:230.35V I:0.1376A P:30.938W PF:0.9763 Freq:50.00Hz Lamp Flux:3750x1 lm		
NAME: IL-PN595U(S) 4.000K	TYPE:	WEIGHT:
SPEC.:	DIM.:	SERIAL No.:
MFR.: EVERFINE	SUR.:550*550	Shielding Angle:

Table--3

UNIT: cd

C( DEG) γ (DEG)	190	195	200	205	210	215	220	225	230	235	240	245	250	255	260	265	270	275	280
0	2006	2006	2006	2006	2006	2006	2006	2006	2006	2006	2006	2006	2006	2006	2006	2006	2006	2006	2006
5	1986	1982	1979	1977	1974	1972	1970	1968	1967	1966	1965	1965	1964	1964	1964	1964	1965	1965	1965
10	1944	1938	1933	1929	1925	1924	1924	1924	1924	1924	1925	1925	1925	1925	1925	1924	1924	1923	1923
15	1883	1874	1869	1869	1870	1872	1874	1874	1875	1876	1877	1879	1880	1882	1883	1883	1884	1883	1882
20	1800	1791	1793	1798	1801	1800	1801	1804	1799	1788	1780	1774	1770	1768	1766	1764	1763	1762	1762
25	1687	1689	1698	1700	1698	1701	1681	1664	1653	1641	1632	1629	1629	1632	1636	1640	1643	1643	1643
30	1525	1543	1549	1545	1536	1520	1501	1475	1459	1456	1465	1477	1491	1502	1514	1521	1523	1520	1512
35	1314	1348	1341	1333	1326	1296	1265	1254	1265	1282	1271	1257	1243	1233	1227	1227	1231	1237	1243
40	1065	1080	1075	1068	1023	1005	1046	1052	1025	1004	989	979	966	953	942	939	942	948	952
45	772	750	778	746	715	736	760	779	799	781	752	720	696	670	652	643	649	662	673
50	553	543	530	501	501	514	542	578	577	565	543	528	525	516	508	507	515	516	519
55	438	437	409	389	379	411	420	400	418	460	457	428	411	396	377	369	376	377	382
60	361	344	345	314	306	304	335	318	315	345	375	332	300	276	246	236	240	234	250
65	283	269	232	219	217	218	241	252	221	261	296	261	234	217	187	175	177	174	182
70	191	173	133	126	126	120	155	198	166	178	212	201	183	162	128	115	115	114	129
75	139	135	86.8	60.7	63.9	71.0	97.9	148	123	126	132	134	127	117	76.7	57.1	52.8	53.8	65.0
80	83.9	84.9	62.3	41.8	40.6	46.4	63.4	84.7	56.5	42.7	29.8	23.5	14.5	7.90	2.28	0.42	0.00	0.40	1.90
85	37.7	35.7	27.0	11.6	0.00	0.00	0.00	0.00	0.00	0.00	0.00	0.00	0.00	0.00	0.00	0.00	0.00	0.00	0.00
90	0.00	0.00	0.00	0.00	0.00	0.00	0.00	0.00	0.00	0.00	0.00	0.00	0.00	0.00	0.00	0.00	0.00	0.00	0.00

βH( ) Range:-90 - 90DEG  
 βH( ) Interval: 1.0DEG  
 Test Speed: HIGH  
 Temperature:25.3DEG  
 Operators:  
 Test Date:2023-06-03

V(B) Range:-75 - 75DEG  
 V(B) Interval: 5.0DEG  
 Test System:EVERFINE GO-2000B\_V1 SYSTEM V2.0.404.7  
 Humidity:65.0%  
 Test Distance:8.240m [K=1.0000]  
 Remarks: IL-PN595U(S) 4.000K

LUMINOUS DISTRIBUTION INTENSITY DATA

Test:U:230.35V I:0.1376A P:30.938W PF:0.9763 Freq:50.00Hz Lamp Flux:3750x1 lm		
NAME: IL-PN595U(S) 4.000K	TYPE:	WEIGHT:
SPEC.:	DIM.:	SERIAL No.:
MFR.: EVERFINE	SUR.:550*550	Shielding Angle:

Table--4

UNIT: cd

C( DEG) γ (DEG)	285	290	295	300	305	310	315	320	325	330	335	340	345	350	355				
0	2006	2006	2006	2006	2006	2006	2006	2006	2006	2006	2006	2006	2006	2006	2006				
5	1966	1967	1968	1969	1970	1971	1972	1974	1976	1978	1980	1982	1984	1987	1990				
10	1923	1922	1922	1923	1923	1924	1926	1928	1931	1935	1937	1939	1941	1945	1949				
15	1881	1880	1878	1875	1872	1869	1865	1863	1865	1868	1873	1879	1881	1883	1887				
20	1762	1764	1769	1776	1787	1802	1809	1801	1794	1787	1789	1795	1804	1808	1811				
25	1640	1636	1632	1630	1630	1636	1656	1685	1721	1707	1694	1690	1700	1713	1714				
30	1501	1488	1478	1469	1469	1470	1476	1485	1519	1567	1576	1545	1540	1567	1577				
35	1248	1253	1255	1257	1259	1257	1265	1282	1284	1291	1336	1337	1290	1320	1340				
40	962	976	991	1008	1022	1016	1012	1021	1036	1017	997	1051	1015	998	1035				
45	688	711	733	752	762	777	793	766	713	725	716	713	760	702	756				
50	531	544	544	548	545	550	547	543	522	466	487	490	516	519	553				
55	406	429	423	435	431	408	383	387	366	352	332	360	370	403	435				
60	296	308	312	357	368	310	298	306	268	252	267	280	302	313	330				
65	223	232	237	296	264	212	258	235	183	190	193	214	241	228	233				
70	172	175	183	218	193	164	208	136	115	119	119	142	173	178	173				
75	106	124	124	134	122	128	142	96.5	73.9	60.2	65.2	86.9	113	133	141				
80	7.06	14.3	21.5	30.7	41.9	54.2	80.6	65.7	45.9	36.1	38.0	51.8	73.0	75.1	68.5				
85	0.00	0.00	0.00	0.00	0.00	0.00	0.00	0.00	0.00	0.00	0.00	9.14	26.8	24.2	25.0	30.1			
90	0.00	0.00	0.00	0.00	0.00	0.00	0.00	0.00	0.00	0.00	0.00	0.00	0.00	0.00	0.00				

βH( ) Range:-90 - 90DEG  
 βH( ) Interval: 1.0DEG  
 Test Speed: HIGH  
 Temperature:25.3DEG  
 Operators:  
 Test Date:2023-06-03

V(B) Range:-75 - 75DEG  
 V(B) Interval: 5.0DEG  
 Test System:EVERFINE GO-2000B\_V1 SYSTEM V2.0.404.7  
 Humidity:65.0%  
 Test Distance:8.240m [K=1.0000]  
 Remarks: IL-PN595U(S) 4.000K